

Global Learners Programme

International Nurse Recruitment



Work, earn and live in England as part of the national health service

Developing people
for health and
healthcare

www.hee.nhs.uk



They arranged everything,
so it was easy for me to
get settled. Remya Kurup,
Harrogate District Hospital



Contents

Welcome

Introduction to the programme

Where we work

The GLP package

Case Studies

What to do now

Welcome and Introduction

Health Education England (HEE) supports the delivery of high-quality patient care through its role in educating, training and developing the health workforce.

The NHS shares many common challenges with health systems globally and we recognise that we can both contribute to and learn from each other, as we all strive to meet future workforce needs. Healthcare workers are globally mobile, highly trained, qualified professionals, and the NHS and the England continues to represent a highly attractive place for nurses to work and develop their skills.



All of our programmes focus on allowing professionals from overseas to access an educational offer. This will include pastoral care, the opportunity to work in the NHS and develop their clinical skills and a formal educational offer working towards transferable qualifications. HEE supports professionals through their preparation for language and competency tests; entry onto the Nursing and Midwifery Council (NMC) register; visa application, and through a comprehensive programme of pastoral care, including cultural sensitivities, prior to and on arrival.

The NHS is the biggest employer in Europe. Health and care staff are the biggest single investment we make in the NHS, and the performance of any healthcare system ultimately depends on its people.

Introduction to the programme

The programme is the only UK government accredited programme for overseas nurses to work in the NHS. The global learners programme offers an exciting educational opportunity for nurses to work in the NHS. You will have the chance to enhance and add to your existing skills whilst working in the NHS.



The Global Learners Programme offers a three-year work-based earning and educational experience in the UK for nurses

The NHS in England delivers care in a diverse range of environments in both teaching and non-teaching acute hospitals. UK healthcare providers offer a wide and varied range of services to their population, across England in areas that will include busy urban cities, rural towns and the countryside.

Once you have applied for the programme you will have an interview with a senior nurse from a UK hospital Trust.

If successful at interview and once all the pre-employment process has been achieved you will be able to travel to the UK and commence the Global Learners Programme.

Flights to the UK and three months accommodation will be provided by the employing hospital trust. You will also be met at the airport on arrival into the UK and taken to your accommodation.

Each employing Hospital Trust will provide a comprehensive programme of pastoral care, to ensure you settle into your new home, community and workplace. This will involve a meet and greet arraignment on arrival into the UK, a programme of orientation, induction and integration.

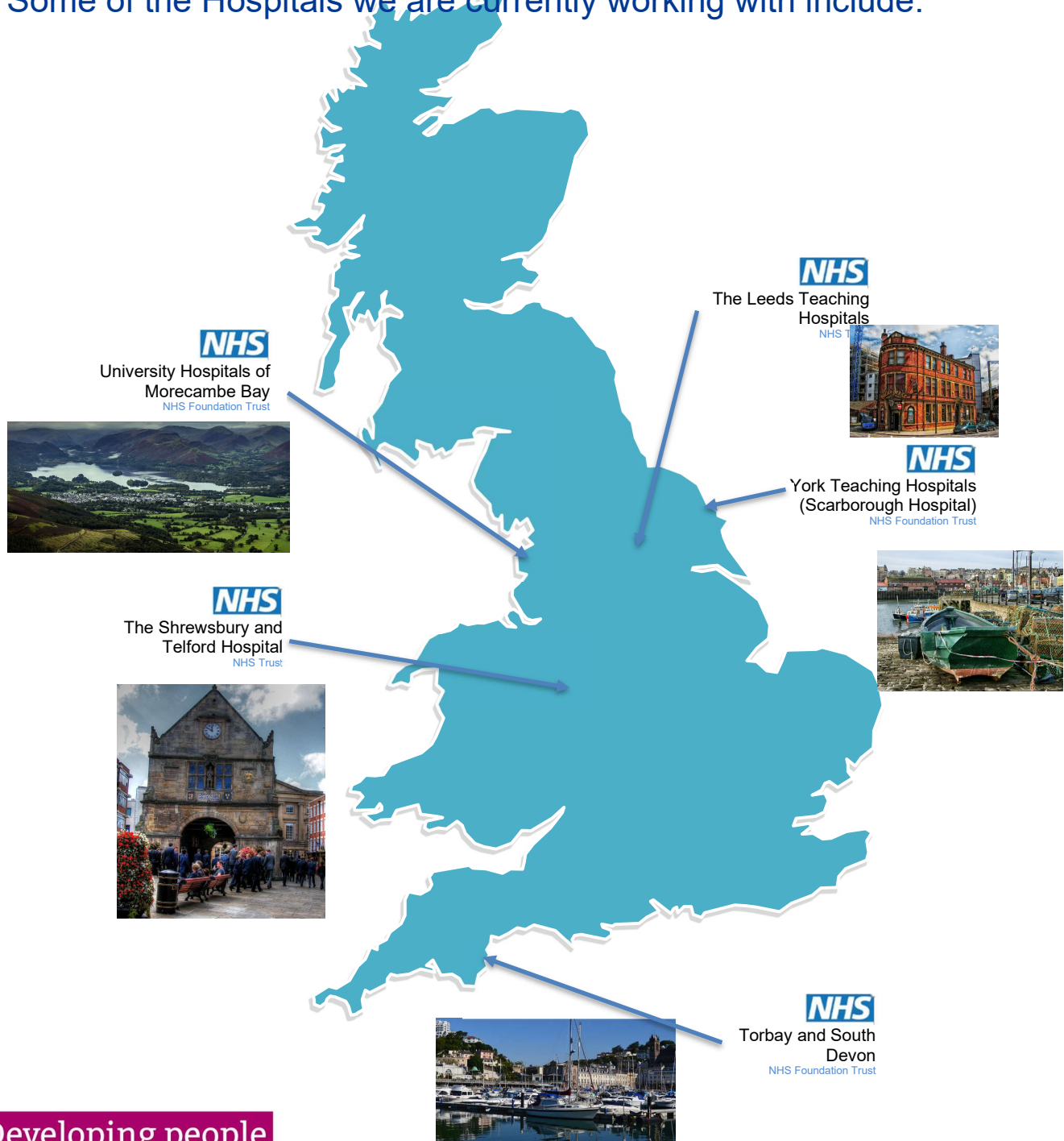
Once settled in Global Learners will commence a formal programme of training and support to prepare them for undertaking the objective structured clinical examination (OSCE) at the NMC accredited OSCE Centre.



Where we work

The Global Learners Programme work with interested NHS hospitals, across England who want to be part of this innovative and ethical programme.

Some of the Hospitals we are currently working with include:



Developing people
for health and
healthcare

www.hee.nhs.uk

The GLP Package

The GLP package has a number of benefits including salary, accommodation and educational support.



Salary

Employment commences at the NHS band 3 salary which is currently £18,813 per year which will generate a monthly take home pay of £1,300 per month.

Promotion to the NHS band 5 salary occurs once you pass the OSCE and are fully registered with the NMC. The Annual salary is £24,214 resulting in a take-home pay of approximately £1,525 per month after tax and national insurance deductions.

Annual Leave

All NHS employees receive 27 days annual leave per year, plus 8 days for general public holidays. After 5 years working in the NHS your annual leave rises to 29 days per year, and after 10 years this becomes 33 days per year.

Accommodation

Three months free accommodation is provided on arrival in the UK.

OSCE

The OSCE simulates a clinical environment and patient scenarios which all registered nurses and midwives are likely to encounter when they assess, plan, implement and evaluate care. The test is completed only in the UK at an approved test centre either at the University of Northampton, Oxford Brookes University or Ulster University. You will have three attempts at this examination within an eight-month timeframe. The GLP has a 100% pass rate on the OSCE examination.

On successful achievement of the OSCE you will apply for registration and PIN with the NMC.

Case Studies

Newly arrived nurses in the UK are often impressed with the training facilities, standard of accommodation and appreciate the differences in lifestyle between India and the UK.



This place gives us more opportunities to develop ourselves.

Jeena Thomas
Harrogate District Hospital



We are getting a lot of opportunities to learn, so I definitely think I will be a better nurse when I go from here.

Thomson Joseph
Harrogate District Hospital



We have nice people around us, it's a good time for myself and my family.

Neethu Shaji
Harrogate District Hospital



They arranged everything before we arrived, so it was very easy for me to get settled.

Remya Kurup
Harrogate District Hospital

More feedback from nurses can be found at the video [here](#)

What to do now

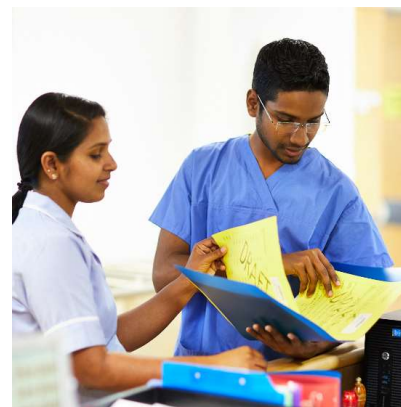
More information on the Global Learners Programme can be found at the website: <http://hee.clients.umpf.co.uk/contact-faqs/>

Training and Support

The Application Process

Our Nurses

Contact and Frequency Asked Questions



Start your application